

GIRLS' HIGH SCHOOL & COLLEGE, PRAYAGRAJ

SESSION 2020 – 21

CLASS - 7 A,B,C,D,E&F

SUBJECT –MATHS

ASSIGNMENT - 2

Instructions for E - learn assignment: The parents to ensure that their ward watch the video instructions for this assignment by clicking on the given link:

<https://youtu.be/GD4fWaZKmD8>

She should revise the lesson given in the book and work on the assignment.

The completed assignment is to be downloaded and filed /pasted in the subject file/copy kept ready for the submission. The day date and procedure of submission shall be notified later.

Topic: Lines and Angles

Solve the following :

1) Write the complement of:

(I) $(x + 5)^\circ$

(ii) $30^\circ 45'$

2) Write the supplement of:

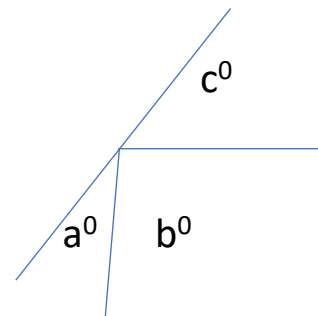
(i) $(90 + a + b)^\circ$

(ii) $80^\circ 49'25''$

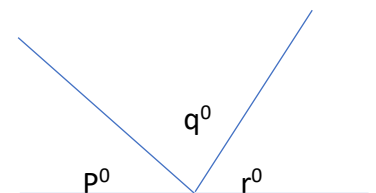
3) a. If two complementary angles are in the ratio 1: 5, find the angles.

b. If two supplementary angles are in the ratio 2: 7, find the angles.

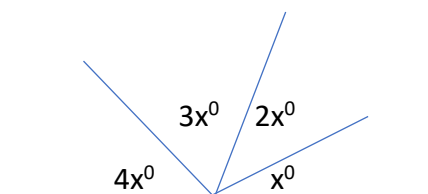
(4) In the adjoining figure, if $b^\circ = a^\circ + c^\circ$, find b .



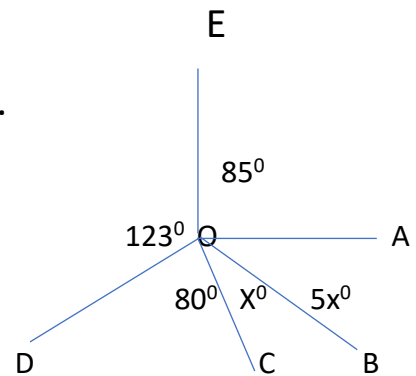
5) In the given figure, $p^\circ = q^\circ = r^\circ$, find each angle.



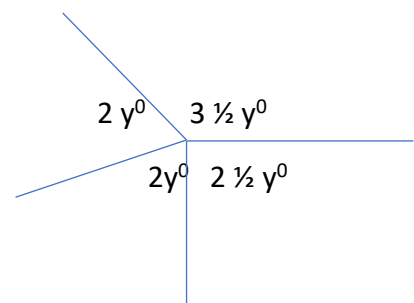
6) Use the adjacent figure, to find angle x and its supplement.



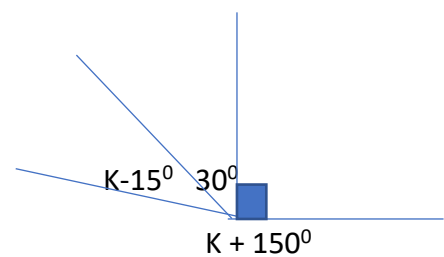
7) In the given figure, find $\angle AOB$ and $\angle BOC$.



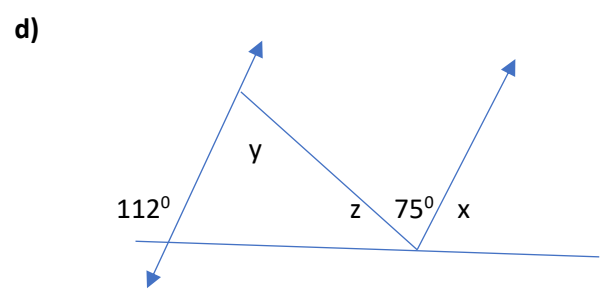
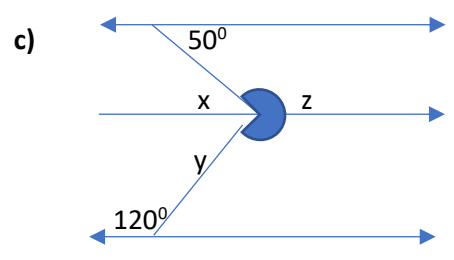
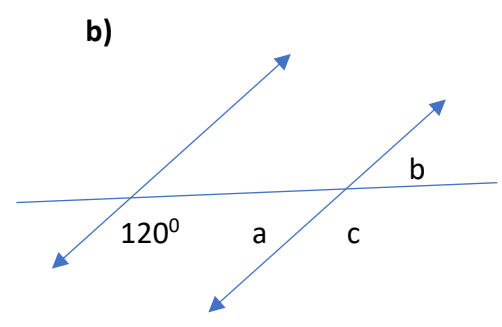
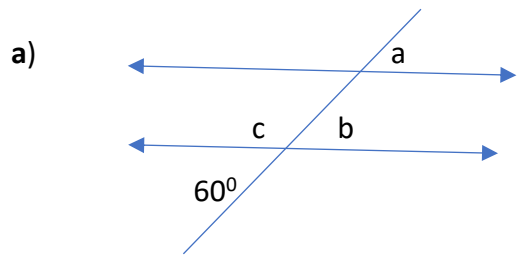
8) Find each angle shown in the figure.



9) Find K in the given figure.



10) In the given figures, the directed lines are parallel to each other. Find the unknown angles.



..... END.....